



# KITCHEN EQUIPMENT

*SERVING THE FOOD INDUSTRY SINCE 1951*

## HEAVY-DUTY COMMERCIAL CHEESE GRATERS

Item: 19921

Model: GR-IT-1491-B

### 2-HP European Heavy-duty Cheese Graters for Hard Cheese

These heavy-duty models allow for easy grating of hard cheese and stale breads. Designed to be suitable for small to medium applications. All models are equipped with a microswitch.



**WARRANTY**  
PARTS AND LABOR



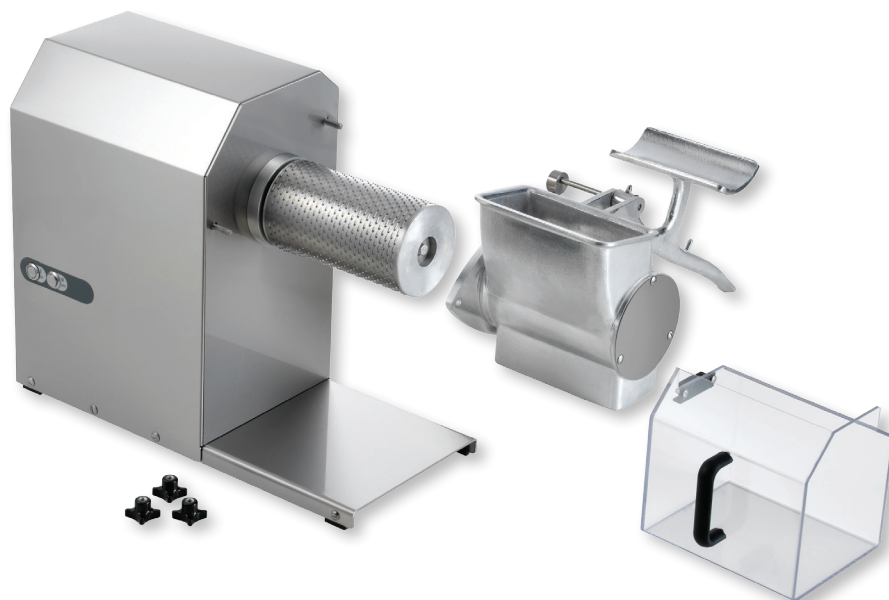
Authorized Dealer



# KITCHEN EQUIPMENT

SERVING THE FOOD INDUSTRY SINCE 1951

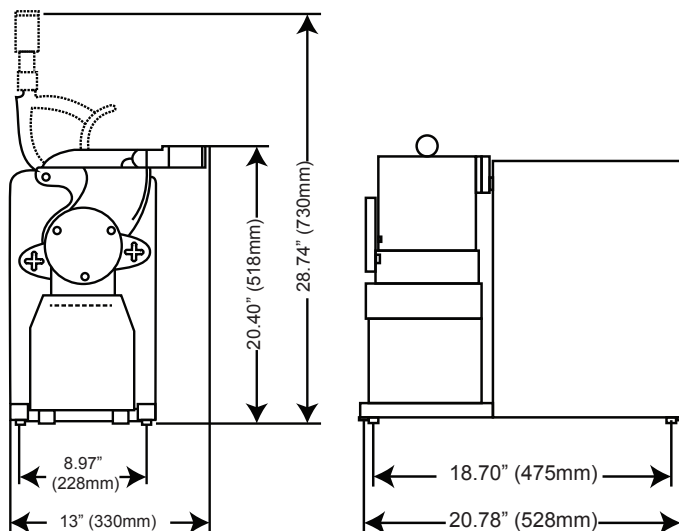
This Heavy-duty Cheese Grater comes with a transparent plexiglas container for a better view of the processed cheese. The aluminum head and stainless steel drum are easily removed without tools that allows for easy cleaning. Self cooled motor for high performance and continuous use.



## TECHNICAL SPECIFICATION

ITEM NUMBER	19921
MODEL	GR-IT-1491-B
POWER	2 HP / 1.49 kW
GRATER REVOLUTION	1400 RPM
BRAKE MOTOR	YES
MOUTH DIMENSION	3.75" x 7.5 / 95.25 x 190.5mm
ELECTRICAL	220V/60Hz/1Ph
WEIGHT	74 lbs. / 33.56 kg
PACKAGING WEIGHT	86 lbs./ 39 kg
DIMENSIONS (DWH)	20.78" x 13" x 20.5" / 528 x 330 x 518mm
PACKAGING DIMENSIONS	30" x 26" x 24" / 762 x 660 x 609mm

## Product Dimensions



NEMA  
6-15  
250 VAC / 15 AMP



## OMCAN INC.

Telephone: 1-800-465-0234

Fax: (905) 607-0234

E-mail: [sales@omcan.com](mailto:sales@omcan.com)

Website: [www.omcan.com](http://www.omcan.com)



Follow us to keep up to date with the latest news and offers



2015.E.O.E